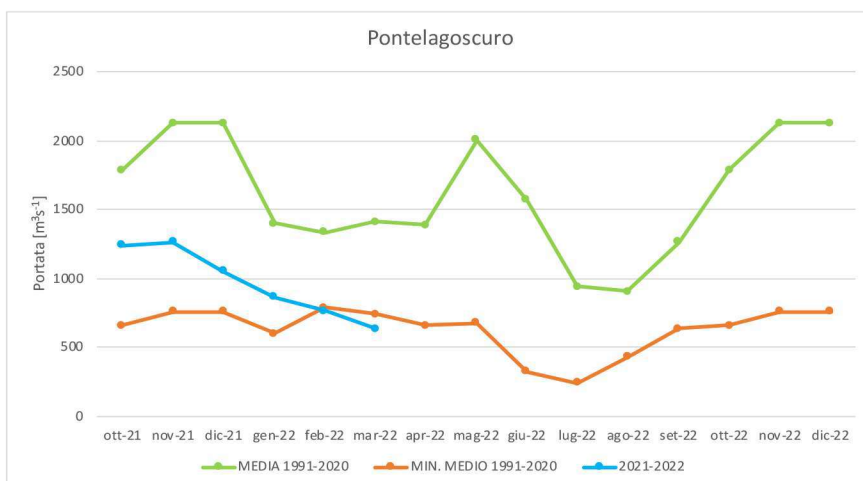
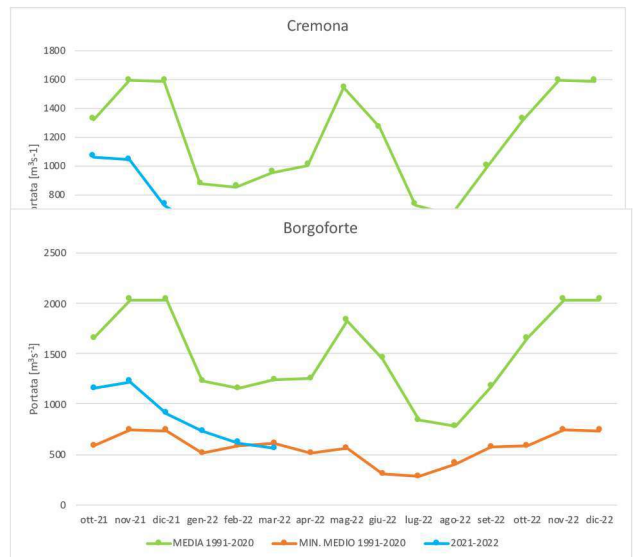
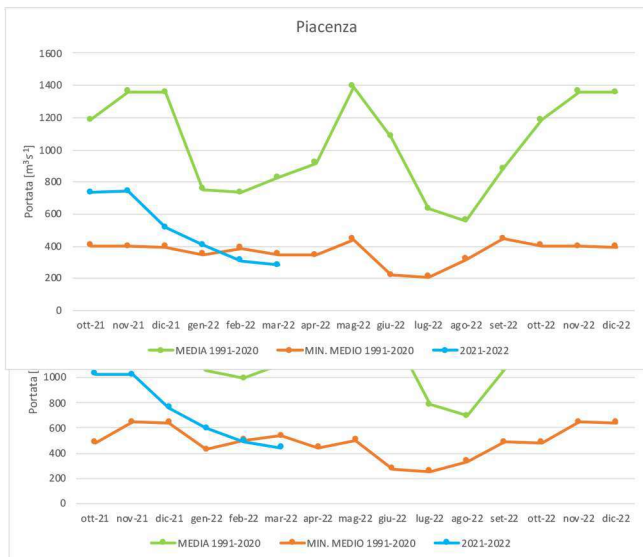


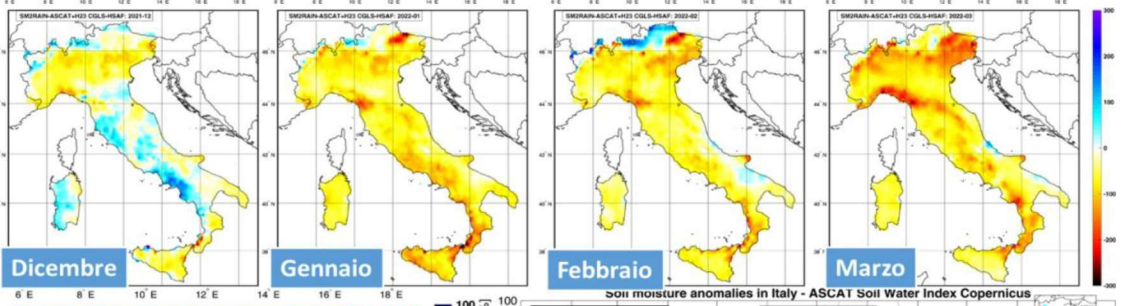


Sezione	Indice SFI (deficit di portata)	Livello portate [m ³ /s]
Piacenza	estrema siccità (-66%)	260
Cremona	estrema siccità (-57%)	382
Boretto	severa siccità (-60%)	420
Borgoforte	severa siccità (-54%)	535
Pontelagoscuro	severa siccità (-55%)	604

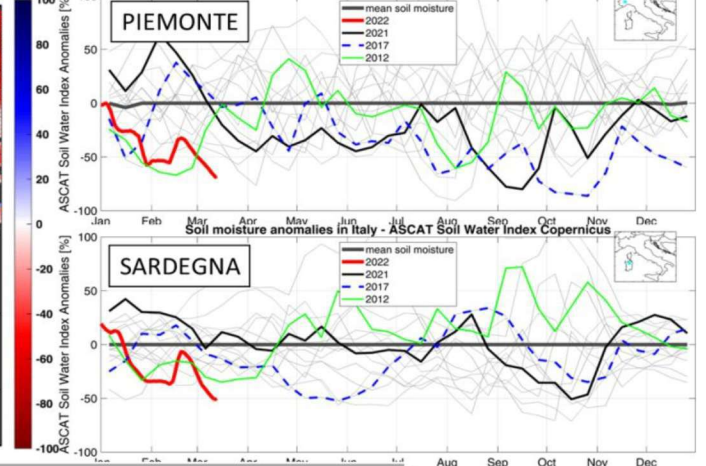
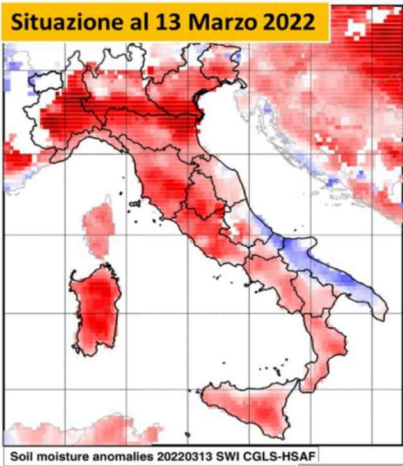




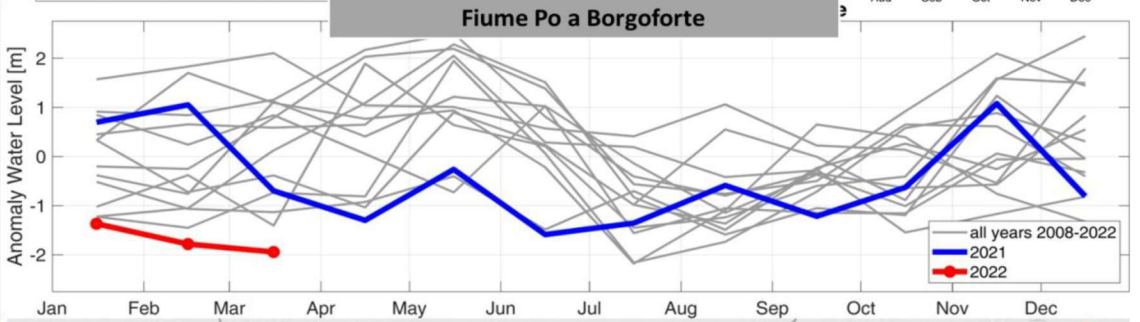
ANOMALIE DI PIOGGIA (mensili)



ANOMALIE DI UMIDITA' DEL SUOLO (mappa e analisi locale)



ANOMALIE DI LIVELLO DEI FIUMI



ANOMALIE DI NEVE (presenza di neve)

